

JUST ADD AUDIO



Audio In



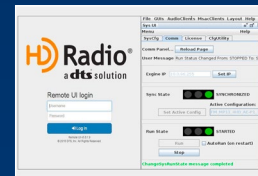
RF Out



Everything Else Is Inside **GV²**



Audio Processing



HD Radio Coding

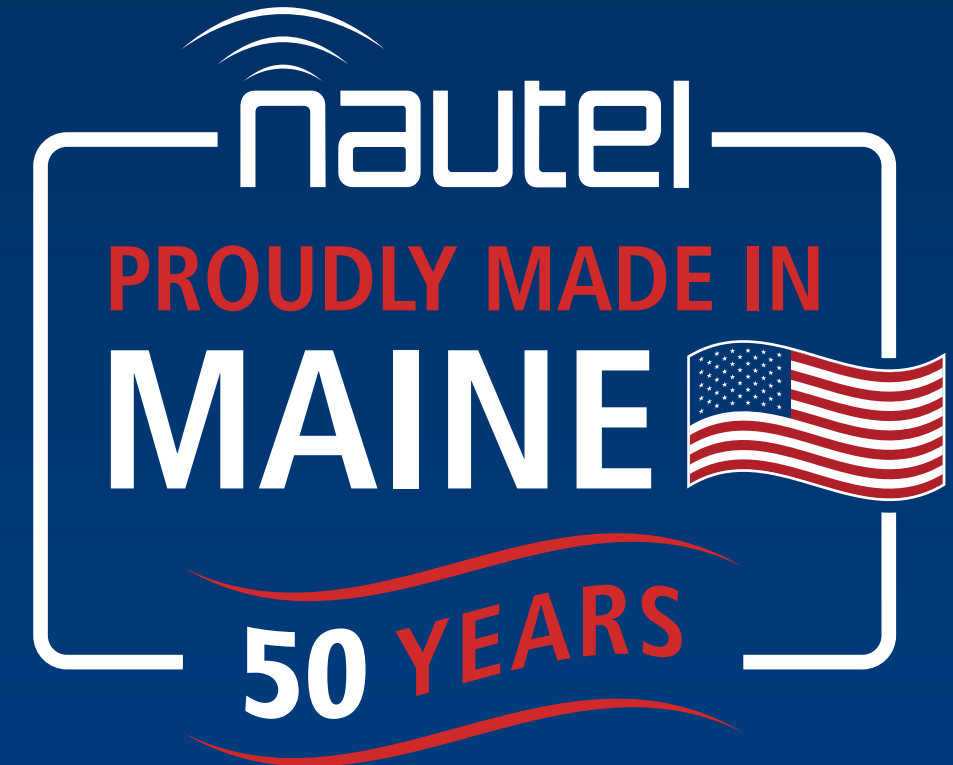


FM+HD Modulation



FM+HD Locked

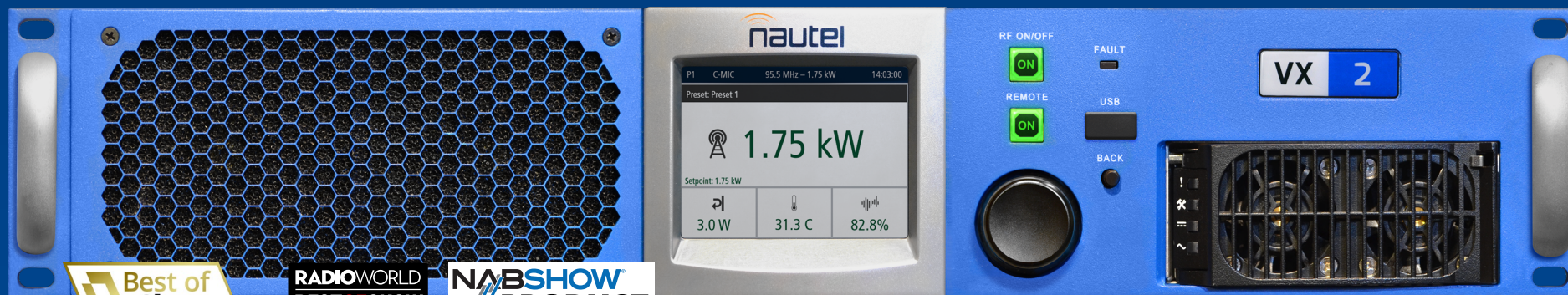
"No external boxes, GPS, or time alignment required"



VX Series

150 W – 6 kW FM
Analog Transmitters

11
Transmitters



1,000 Thanks! Over 1,000 shipped since launch.

BOOTH
GUIDE
W2809

World's Largest FM/AM Manufacturer

100% North American Owned

1 **VX Series** 150 W – 6 kW FM Analog Transmitters



VX Series

11 analog FM transmitters with outputs of 150 W to 6 kW. The VX Series offers advanced control and instrumentation in a compact footprint with state-of-the-art DSP, power supply, and FET technology.



2 **VX Audio Player/Audio Back Up/Streaming**

Internal playlists with playlist are now available. ShoutCast/Icecast streaming input will follow shortly.



Live Demo

Main/Standby & N+1

Looking for the ultimate On-Air dependability? Check out the SC4 and VS-TC main/standby controllers from Nautel.

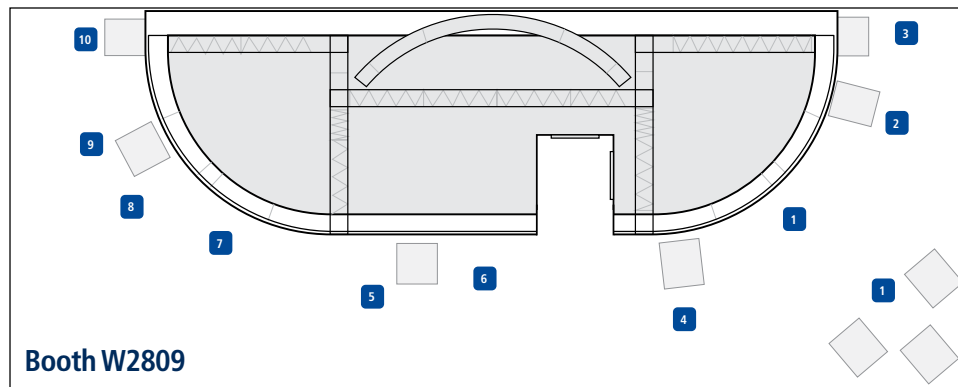
3 **NVLT Series**

NVLT Series transmitters are affordable transmitters for analog/digital FM broadcasting. Based on a proven architecture, they're built tough with parallel power amplifiers, parallel power modules, and hot-swap power supplies.



4 **GV² Series**

With substantial computational power, Nautel's 2nd generation GV Series transmitters dramatically simplify HD Radio deployments. Loading the optional software-based air chain lets you "Just Add Audio."



5 **JUST ADD AUDIO**

GV² transmitters can integrate all HD Radio™ components inside the transmitter, providing support for HD Radio™ with Xperi Gen4 Importer, Exporter, and Engine implementations for HD Radio™ encoding, station logo, and artist experience.



6 **Omnia for Nautel**

World class audio processing for HD Multicast+ and new Software-Based Air Chain.



AUI: Advanced User Interface

A totally rewritten AUI with an all-new operating system and architecture that will be standard on all new Nautel transmitters. See the New AUI in action on GV, GV2, & VX transmitters.



7 **Visual Radio Air Chain**



The Visual Radio Air Chain extends Nautel's award winning software-based approach for HD Radio even further by integrating Quu and Rapid functionality directly into the transmitter with integrations that tie in studio automation.

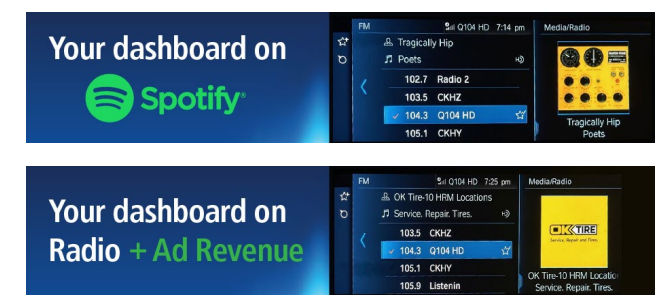


Live Demo



8 **Increase listener engagement and drive revenue**

Experience a seamless visual radio deployment in action. This extensive hands-on demo will showcase a real-time implementation of station logos, album art, advertiser graphics, and metadata synchronization, offering an interactive look at how radio stations can "own the dashboard" in today's competitive in-car audio space.



9 **Your Station On Air with Visual Radio**



After you've toured the visual radio demo, ask how Nautel's test drive for eligible broadcasters can help you test visual radio in your market.

10 **NX Series & MDCL power savings**

Current MDCL modes can create enough power savings to pay back the transmitter purchase in as little as 3-5 years.

